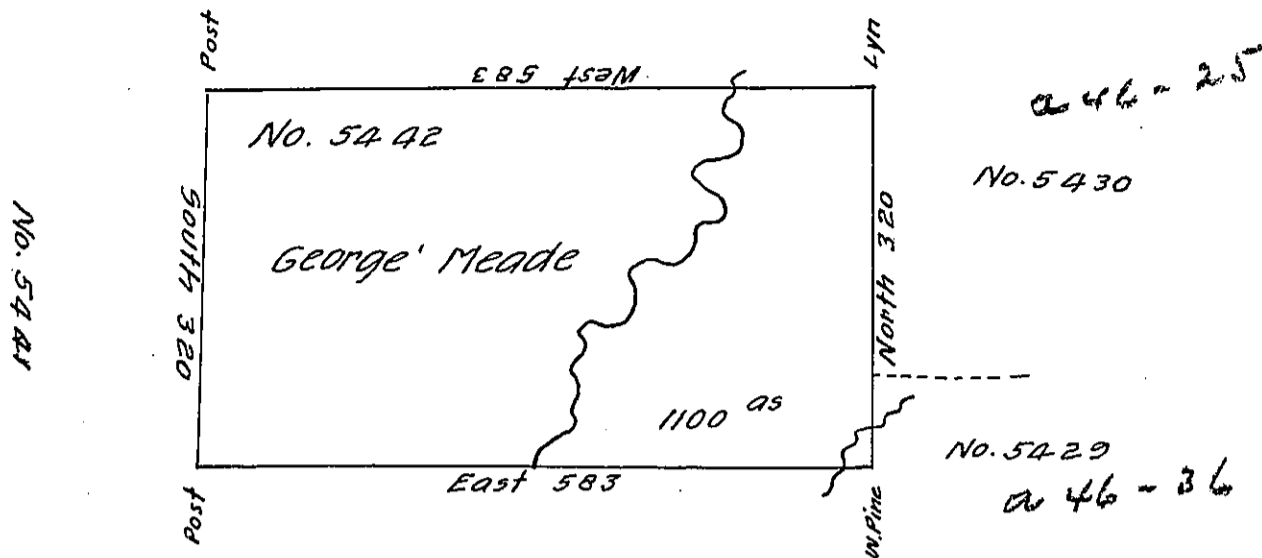


a 77-266

No. 5439



No. 5443

C 154-145

Situate on the Waters of Sinnemahoning Creek in North<sup>d</sup> County, Containing 1100 acres and the usual allowance for Roads. Surveyed May 16<sup>th</sup> 1794 for George Meade in pursuance of a Warrant No. 5442, dated 3<sup>d</sup> May 1794.

John Canan D.S.

Daniel Brodhead Esq<sup>r</sup> S.G.

IN TESTIMONY that the above is a copy of the original remaining on file in the Department of Internal Affairs of Pennsylvania, made conformably to an Act of Assembly approved the 16th day of February, 1833, I have hereunto set my Hand and caused the Seal of said Department to be affixed at Harrisburg, this twelfth day of January 1906

*Loac P Brown*  
 Secretary of Internal Affairs.